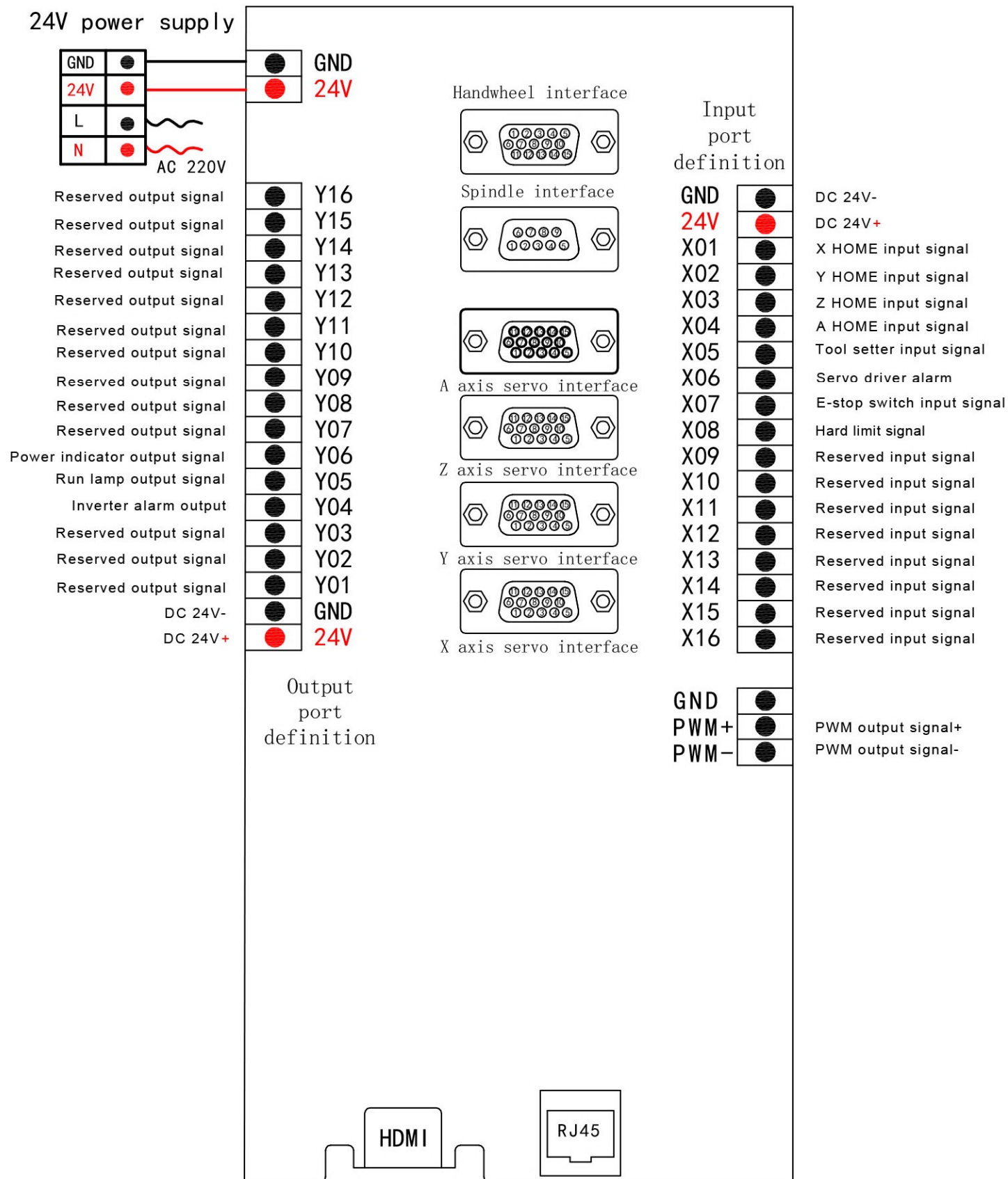
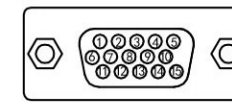


# B58 Servo Board Wiring Diagram



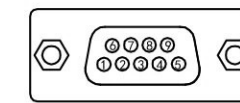
Handwheel interface



Handwheel interface pin definition

|    |       |                            |
|----|-------|----------------------------|
| 1  | HX1   | handwheel speed ratio X1   |
| 2  | HX10  | handwheel speed ratio X10  |
| 3  | HX100 | handwheel speed ratio X100 |
| 4  | GND   | return circuit ground      |
| 5  | 5V    | 5V                         |
| 6  | ESTOP | handwheel E-stop switch    |
| 7  | HSX   | handwheel axis selection X |
| 8  | HSY   | handwheel axis selection Y |
| 9  | HSZ   | handwheel axis selection Z |
| 10 | HS4   | handwheel axis selection 4 |
| 11 | HA+   | handwheel encoder A+       |
| 12 | HA-   | handwheel encoder A-       |
| 13 | HB+   | handwheel encoder B+       |
| 14 | HB-   | handwheel encoder B-       |
| 15 | HS5   | handwheel axis selection 5 |

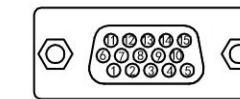
Spindle interface



Spindle interface pin definition

|   |        |                         |
|---|--------|-------------------------|
| 1 |        | N/A                     |
| 2 | INALM2 | Inverter alarm input 2  |
| 3 | SP CCW | SP CCW (SP2 CW)         |
| 4 | SP CW  | SP CW (SP1 CW)          |
| 5 |        | N/A                     |
| 6 | OA1    | Spindle analog output 1 |
| 7 | OA2    | Spindle analog output 2 |
| 8 | INALM1 | Inverter alarm input 1  |
| 9 | GND    | Return circuit ground   |

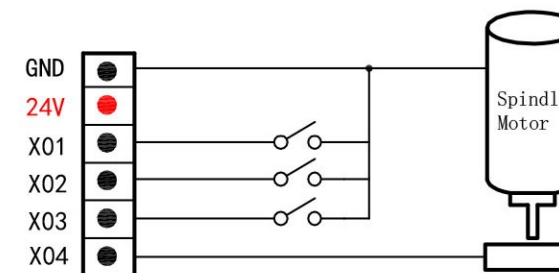
X axis servo interface



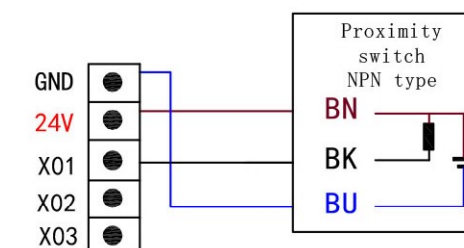
Servo axis interface pin definition

|    |         |                   |
|----|---------|-------------------|
| 1  | A+      | servo encoder A+  |
| 2  | A-      | servo encoder A-  |
| 3  | B+      | servo encoder B+  |
| 4  | B-      | servo encoder B-  |
| 5  | C+      | servo encoder C+  |
| 6  | 24V     | 24V+              |
| 7  | C-      | servo encoder C-  |
| 8  | ALM     | servo alarm input |
| 9  | SRV ON  | servo enable      |
| 10 | SRV CLR | servo alarm clear |
| 11 | PULS+   | pulse difference+ |
| 12 | PULS-   | pulse difference- |
| 13 | STGN+   | pulse direction+  |
| 14 | STGN-   | pulse direction-  |
| 15 | GND     | 24V return ground |

Mechanical HOME switch



Photoelectric HOME switch



|              |                                  |
|--------------|----------------------------------|
| Model No.    | B58 4 axis motion control system |
| Company Name | Beijing RichAuto S&T Corp., Ltd. |